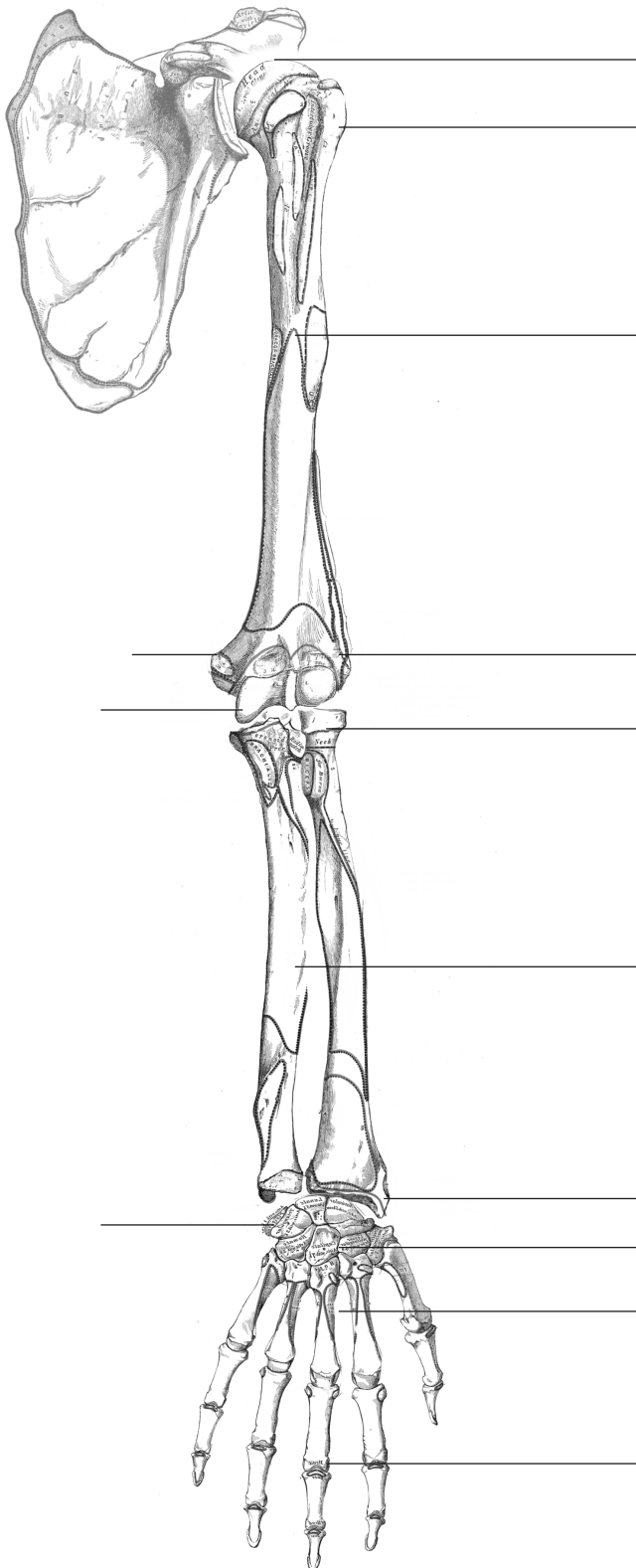


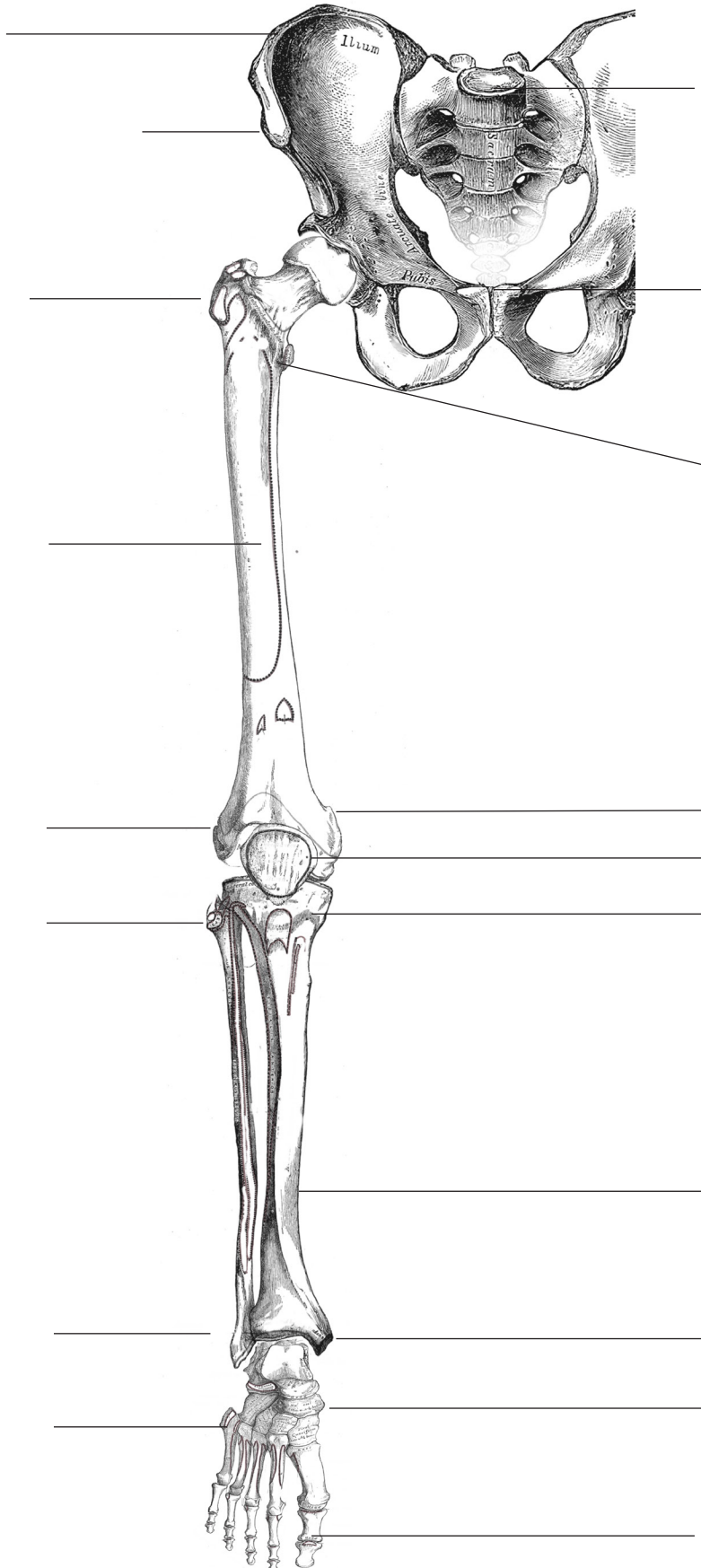
What are main bones and landmarks of upper limb?

90% pass mark



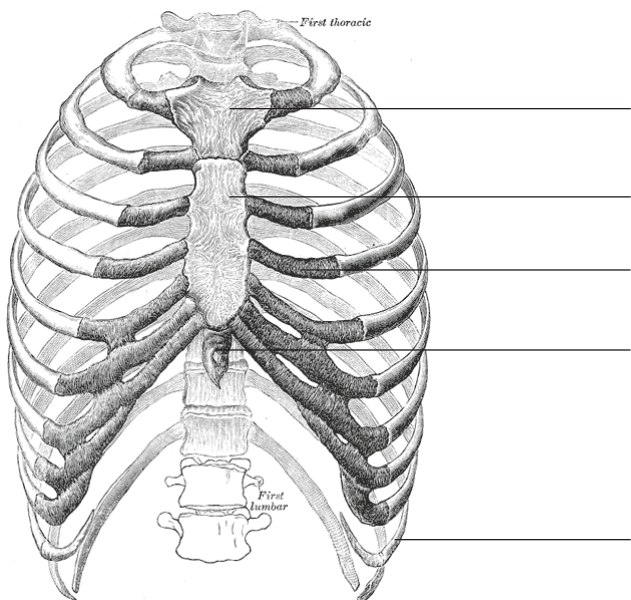
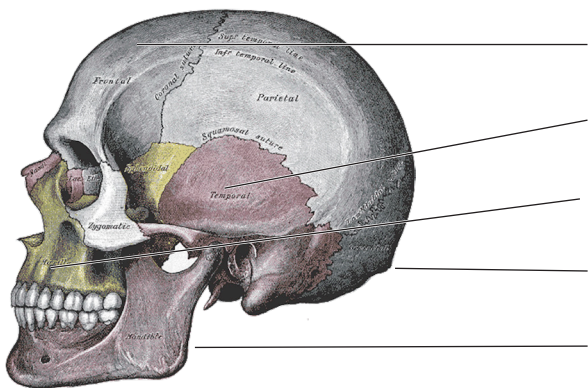
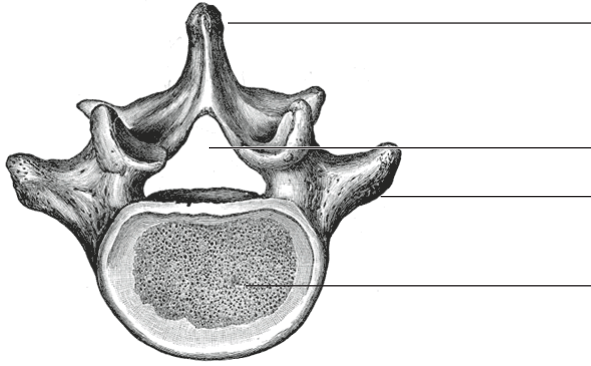
What are main bones and landmarks of upper limb?

90% pass mark



Name these bones and parts of bones

90% pass mark

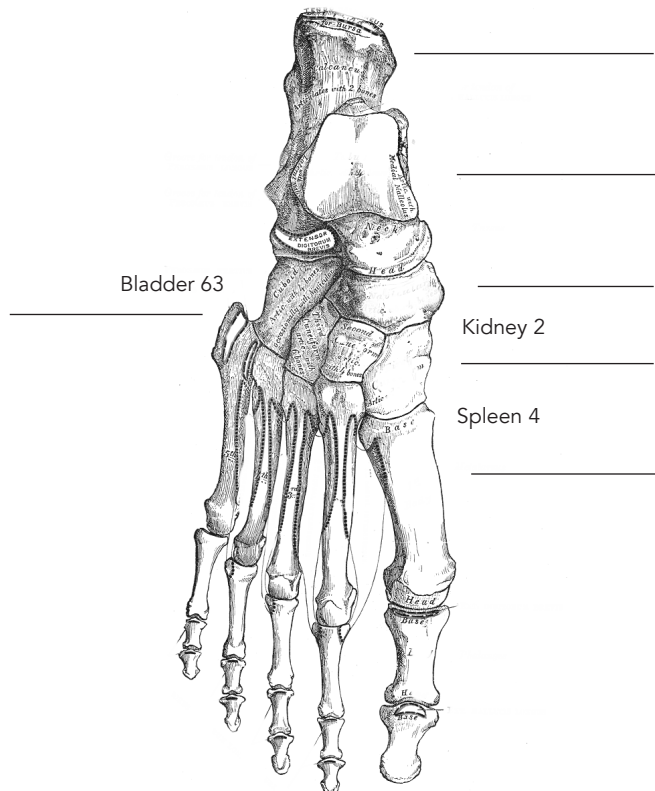
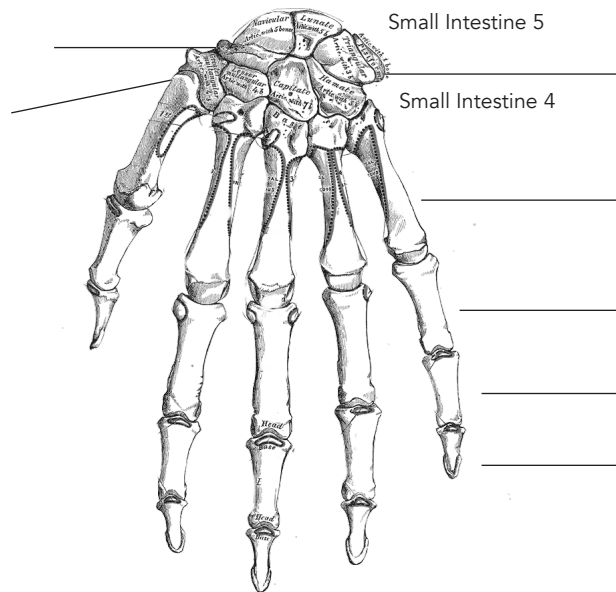


# Anatomy

## Month Six

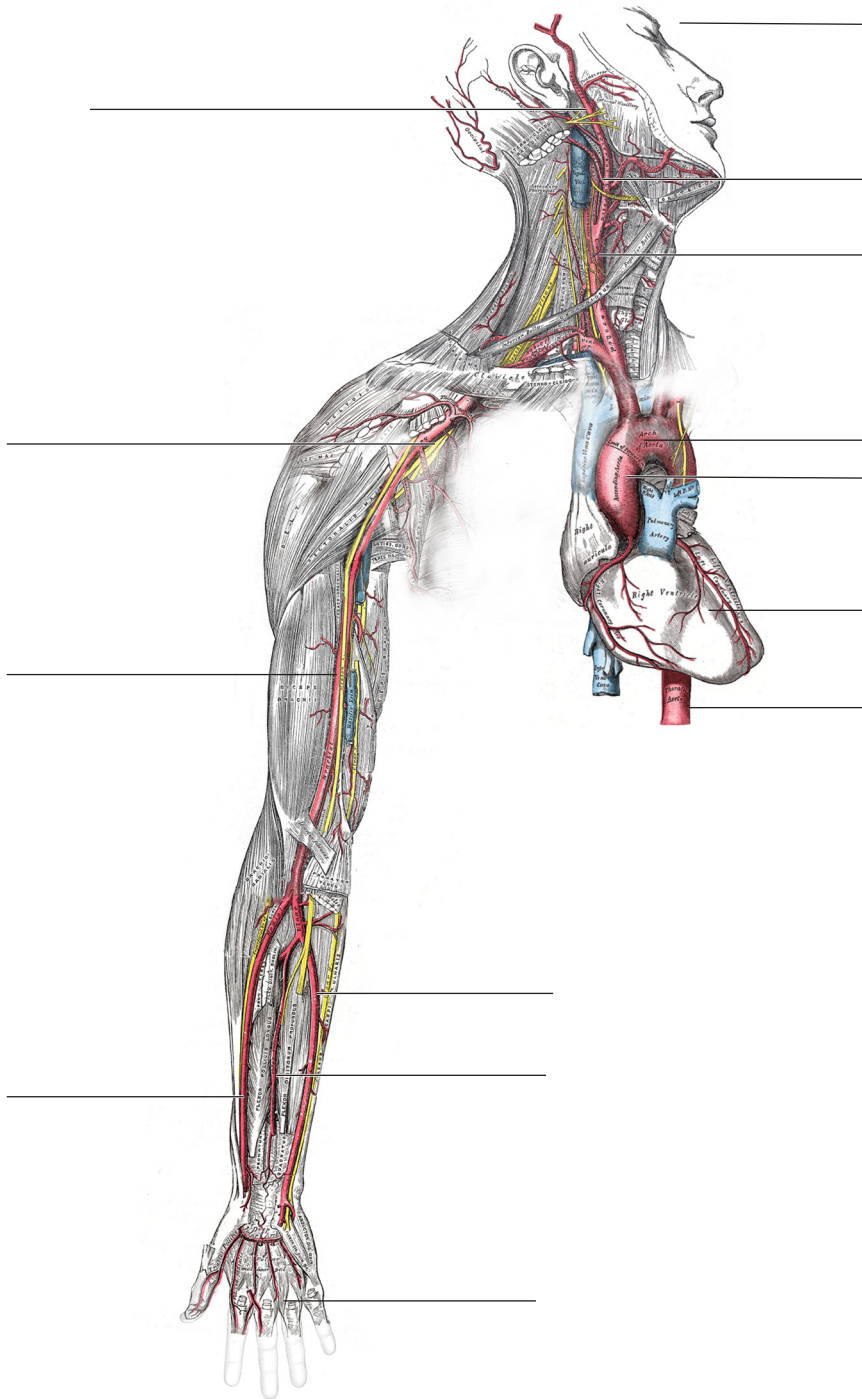
Name these bones and parts of bones

90% pass mark



Name these arteries (heart channel)

90% pass mark



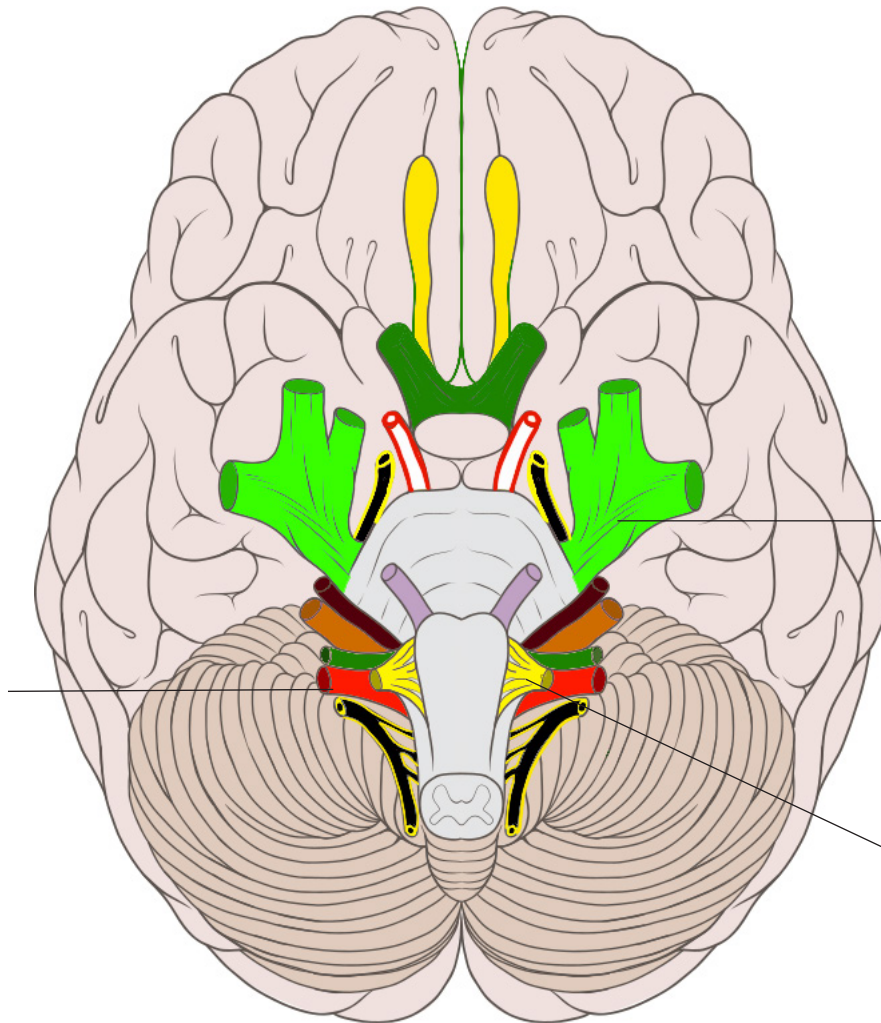
*The heart channel and major arteries above the diaphragm are the exact same thing.*

Cranial Nerves

Underside of Brain

-----

(parasympathetic)



Trigeminal (triple burner)  
implicated in

-----

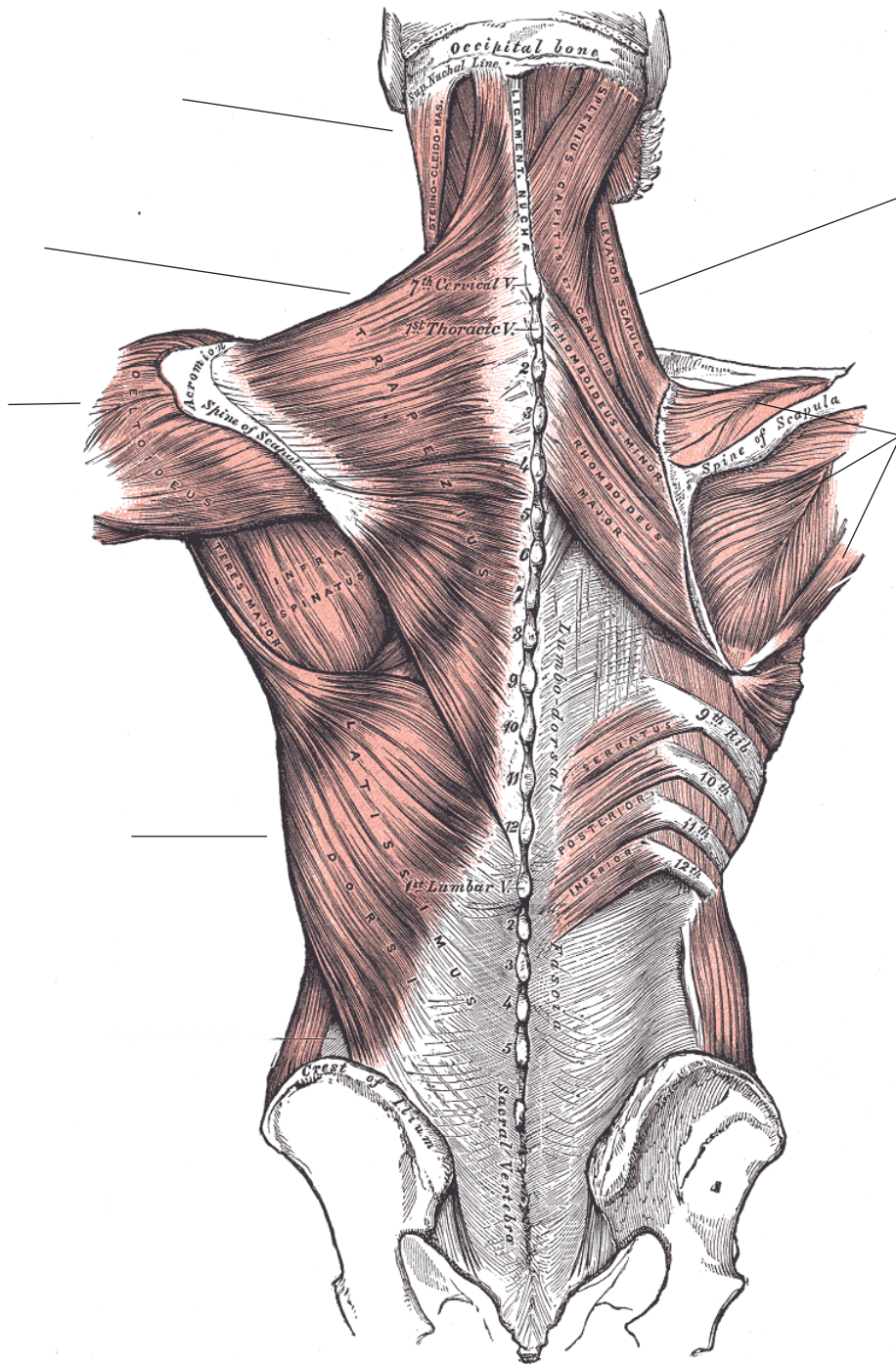
Facial (stomach)  
when paralysed causes

-----

Fill in the blanks. At the top write the extraordinary channel that corresponds to the parasympathetic system and below the major nerve that supplies this in the body.



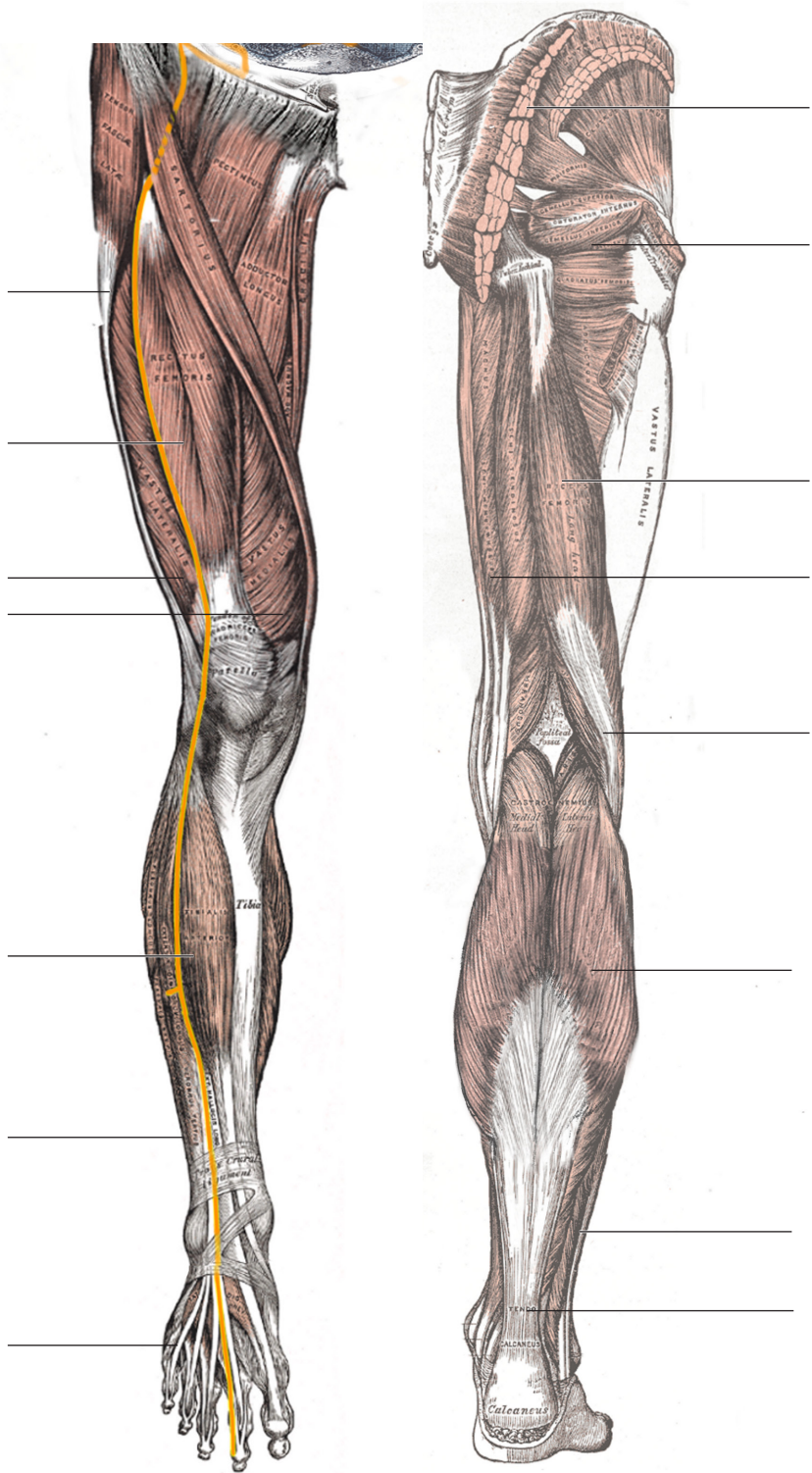
Muscles of Back  
90% pass mark



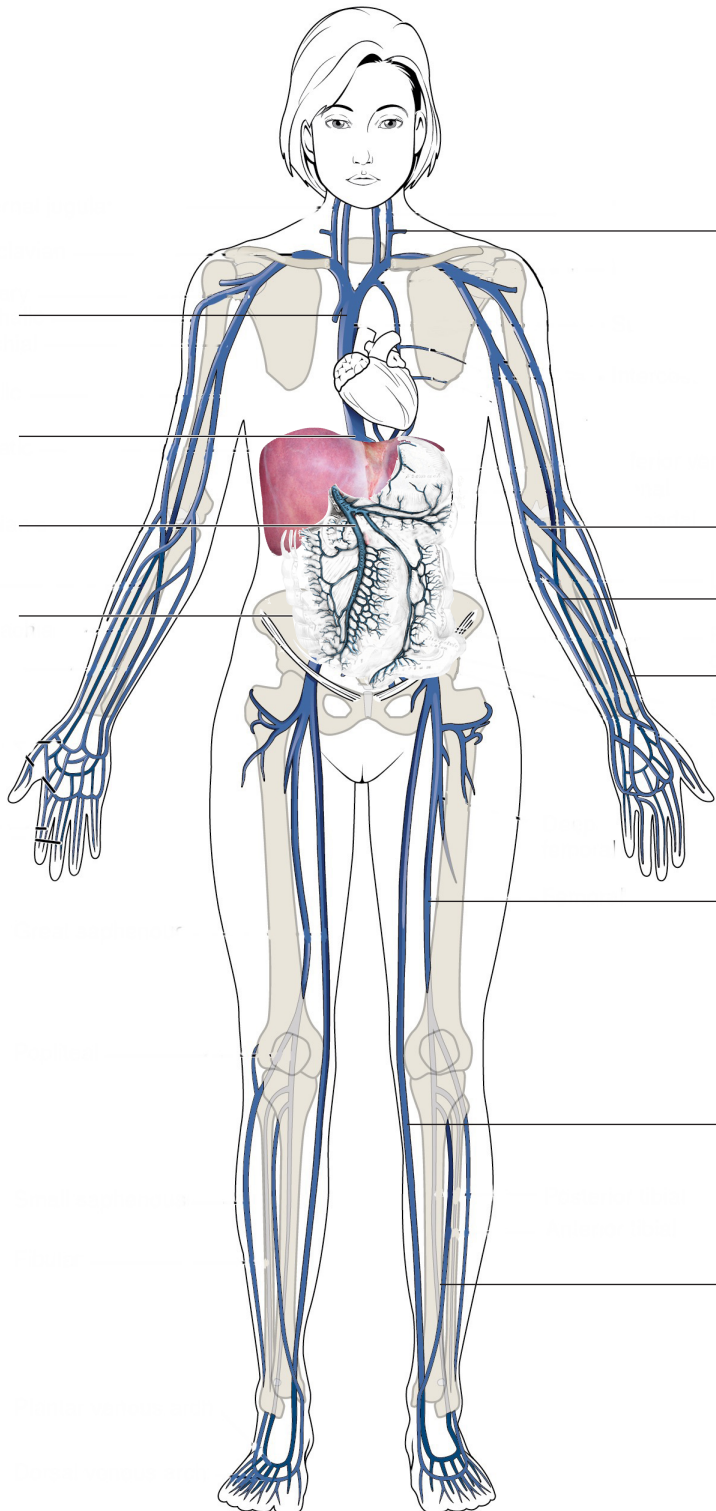
Muscles of Legs  
100% pass mark

ANTERIOR

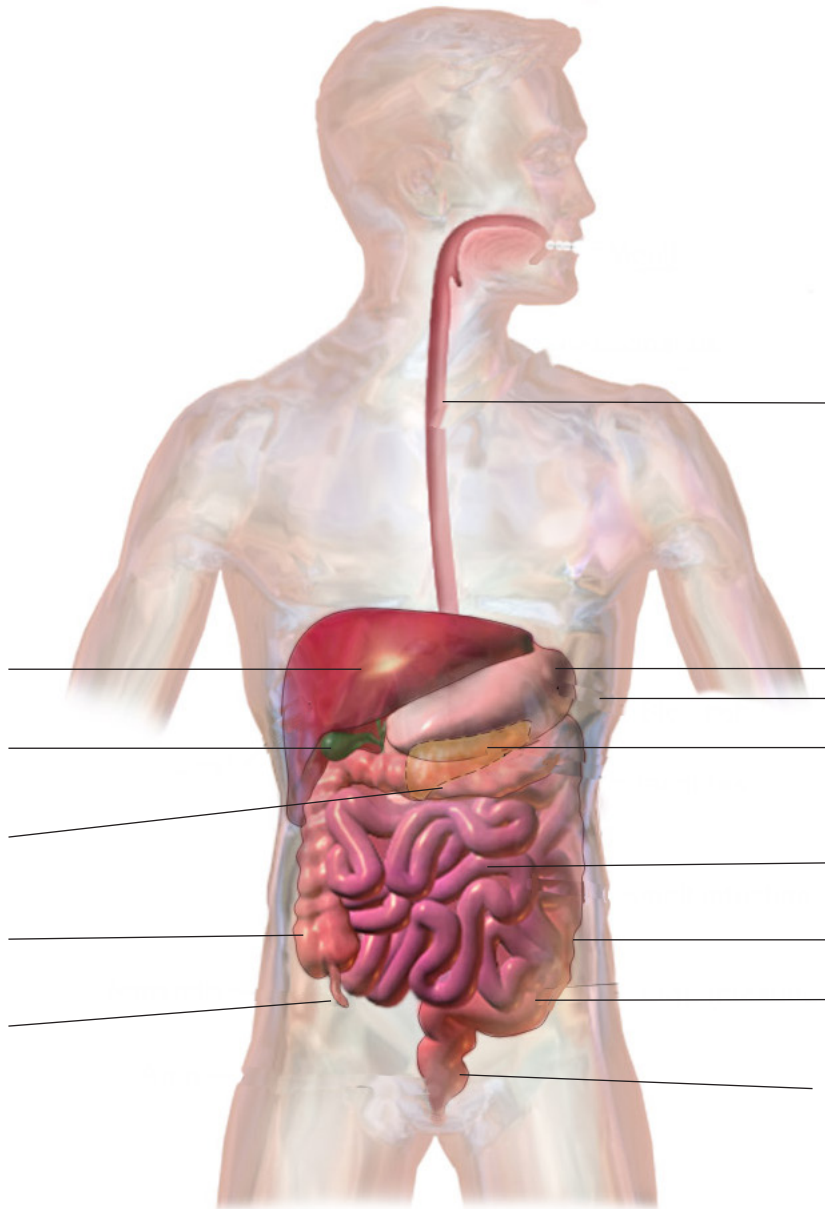
POSTERIOR



**Veins of the body**  
**90% pass mark**

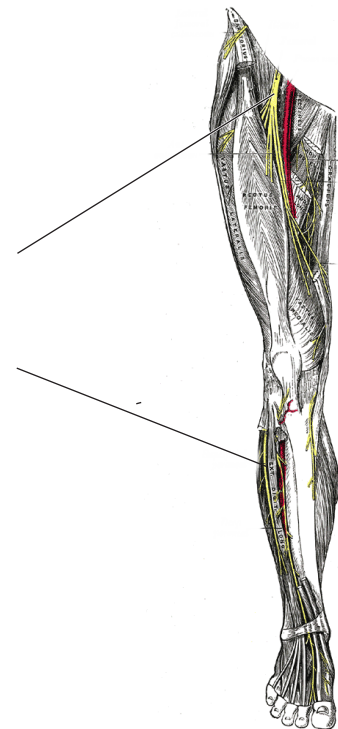
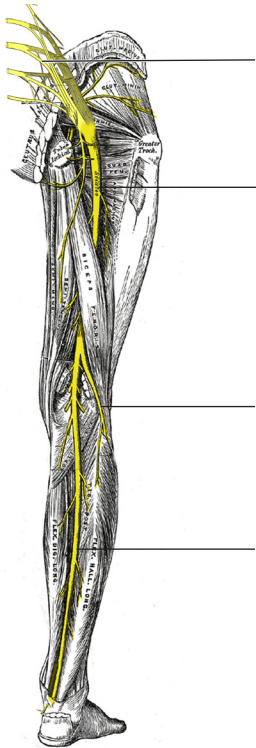
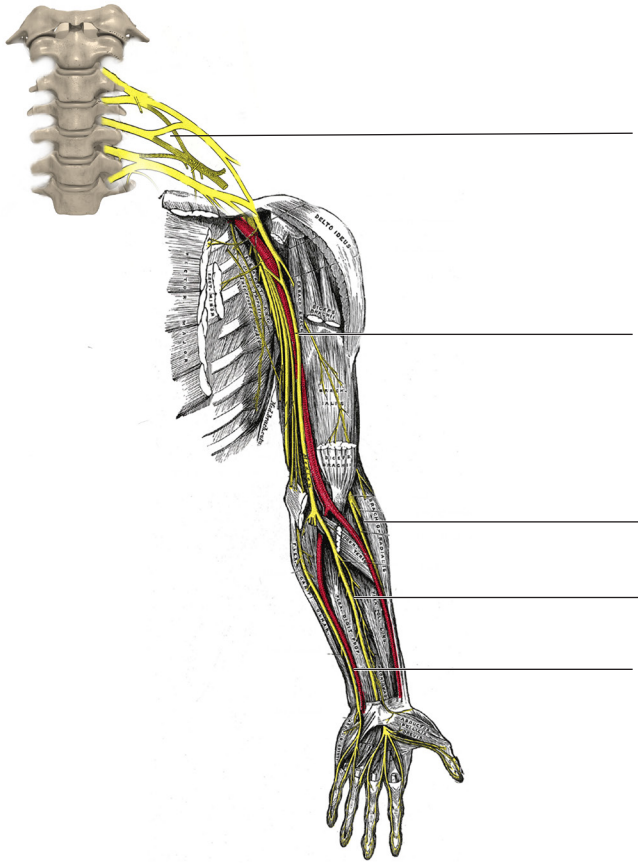


Gross Anatomy  
90% pass mark



The digestive tract is a single tract which is lined by endoderm which itself is surrounded by muscle. The endoderm is taiyin, the muscle is yangming. The divisions above are essentially artificial.

Nerves and of the arm and leg + innervation  
90% pass mark



The nerves of the body emerge from ectoderm and so are part of the taiyang division.  
They are rich in qi

Functions of the Spleen

75% pass

	Function	Actual function	Hormone involved	When goes wrong!	Example of drug used
PATHOGEN					None. Severe cases will cause leukaemias. Vincristine can work well.
SPIRIT					Selective serotonin reuptake inhibitors eg prozac work for OCD.
SENSE					Nil. Lung 7 may help though!
MANI-					Operations
FUNC-					Serotonin blockers (banned as caused bowel obstruction)
FUNCTION					Insulin
FUNCTION					Aspirin (causes bleeding).

Functions of the Lung

75% pass

	Function	Actual function	Hormone, cells, nerve or organ.	When goes wrong!	Example of drug used
PATHOGEN					Oxygen
SPIRIT					Thyroxine can be given.
SENSE					Nil. Lung 7 is a classic point to clear damp from face.
MANIFESTS			Nil		Antifungals. Steroids for eczema (which convert essence to liver-blood).
FUNCTION					Salbutamol is an adremaline agonist. Makes airways open. Allows kidneys to anchor lung qi,
FUNCTION					Decongestents. These contain adrenaline like substances.

### Functions of the Kidney

75% pass

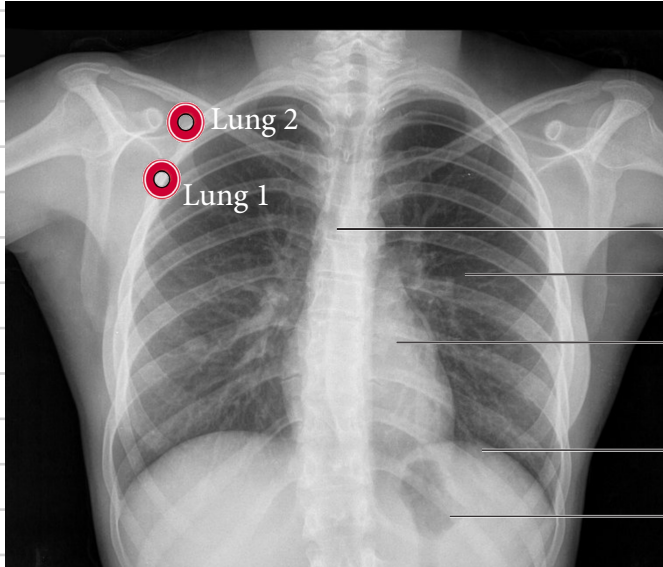
	Function	Actual function	Hormone, cells, nerve or organ.	When goes wrong!	Example of drug used
PATHOGEN					Oxygen
SPIRIT					Dopamine agonists.
SENSE			?		Nil
MANIFESTS					Nutrients.
FUNCTION					Diuretics Medications to reduce blood pressure.
FUNCTION					Dopamine agonists.
FUNCTION					Nil however beta-blockers would work.

Functions of the Pericardium

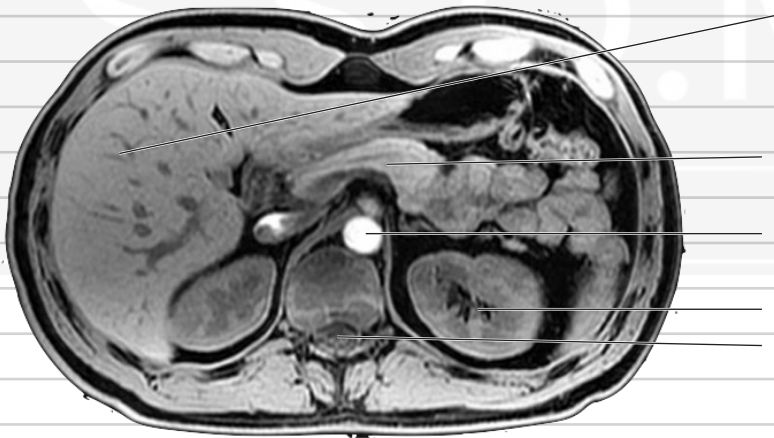
75% pass

	Function	Actual function	Hormone, cells, nerve or organ.	When goes wrong!	Example of drug used
PATHOGEN					If presence of clots detected then drugs that work on the liver to dissolve clots eg warfarin.
SPIRIT					
SENSE	As heart				
FUNCTION	As heart (kind of)				

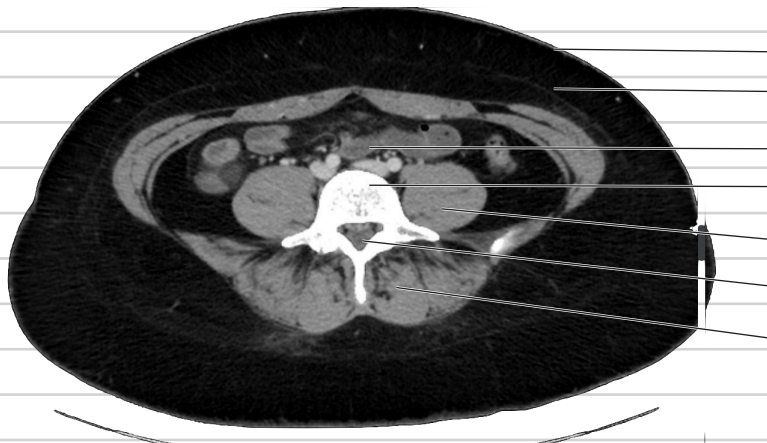
**Name these parts of the chest?**



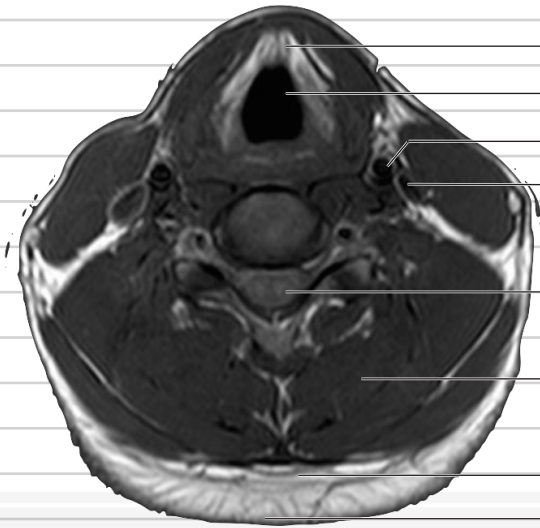
**Name these organs in the abdomen?**



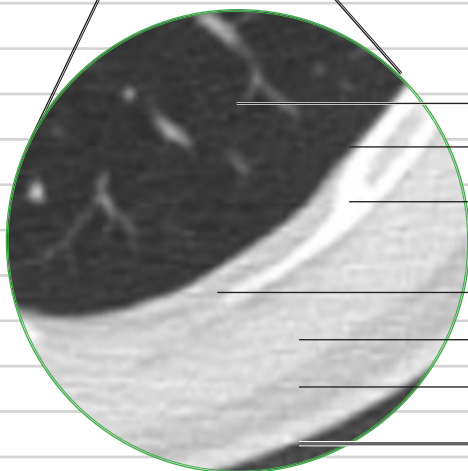
**Name these organs in the pelvis?**



**What are critical structures in the neck?**



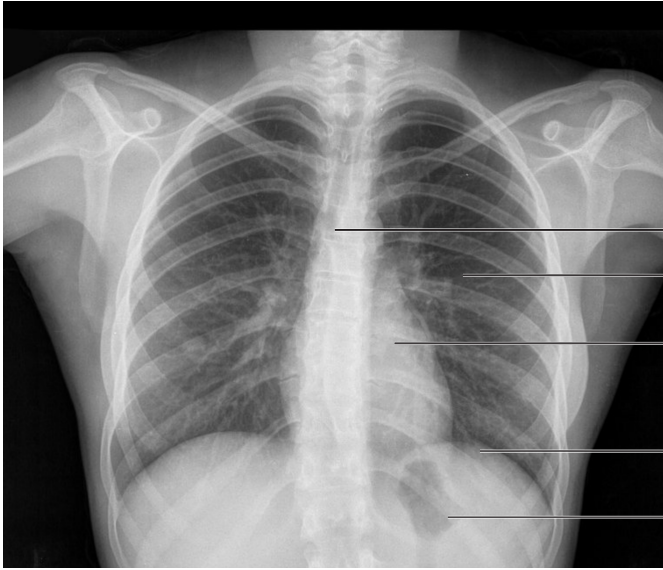
**What layers do you have to go through to penetrate into the pleural cavity?**



Functions of the Extraordinary Channels

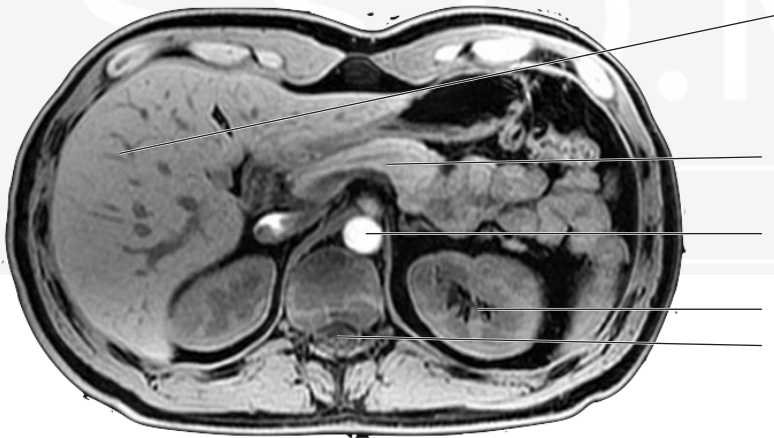
Extr-Channel	Western 'thing'	Function	Opening Point	Confluent	When goes wrong
REN					Weakness
YIN QIAO MAI					Dry mouth, bladder problems, sweating problems.
YANG QIAO MAI					Balance issues, sleep issues, bladder problems.
DU MAI	<b>Generally wind in the body.</b>				
CHONG MAI					Menstrual problems.
YIN WEI MAI					Clumps of tissues, microcirculation problems which can affect nerves.
YANG WEI MAI					Tinnitus
DAI MAI					Hip and back pain.

**Name these parts of the chest?**

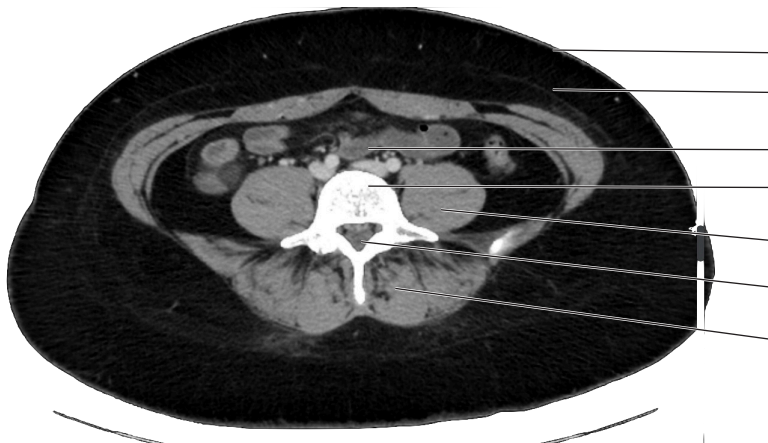


Mark an x where Lung 1 and 2 are.

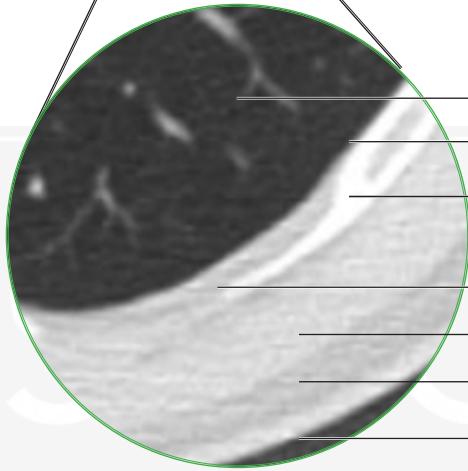
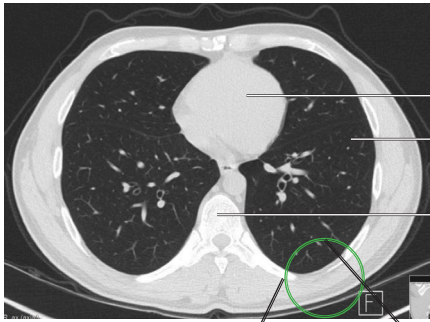
**Name these organs in the abdomen?**



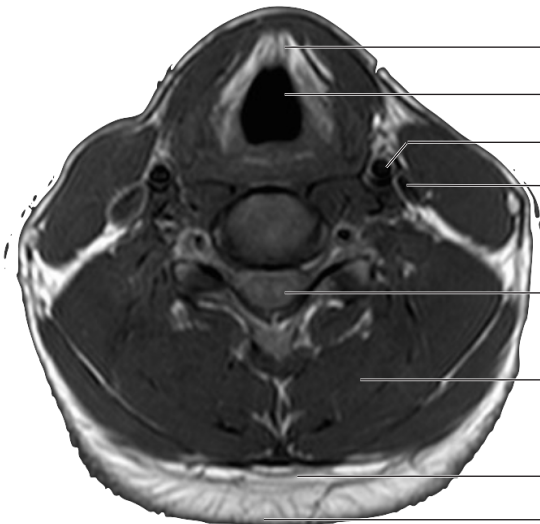
**Name these organs in the pelvis?**



**What layers do you have to go through to penetrate into the pleural cavity?**



**What are critical structures in the neck?**



**Name the Luo Points and distance from wrist / ankle for each of the channels?**

Number

Name

Distance

Lung

Large Intestine

Heart

Small Intestine

Pericardium

Triple Burner

Liver

Gallbladder

Spleen

Stomach

Kidney

Bladder

S.S.O.M.A.



**Name the hui-points for the following substances?**

Point

Rational Explanation

Qi

Blood

Blood vessels

Yin organs

Yang organs

Marrow

Tendons

Bones

## Name the alarm points for the following organs?

Number

Name

Lung

Large Intestine

Heart

Small Intestine

Pericardium

Triple Burner

Liver

Gallbladder

Spleen

Stomach

Kidney

Bladder