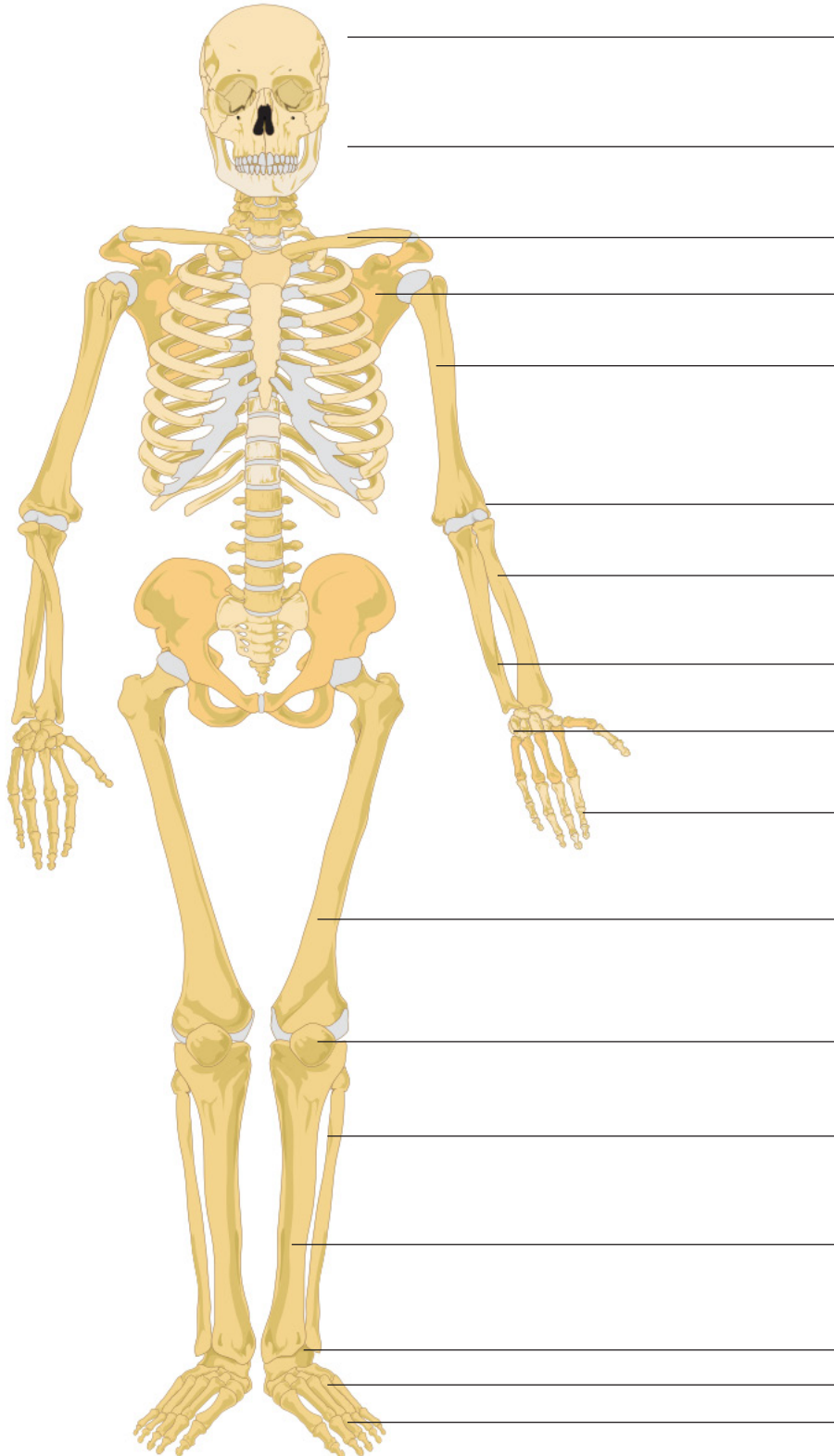


Anatomy

Month One

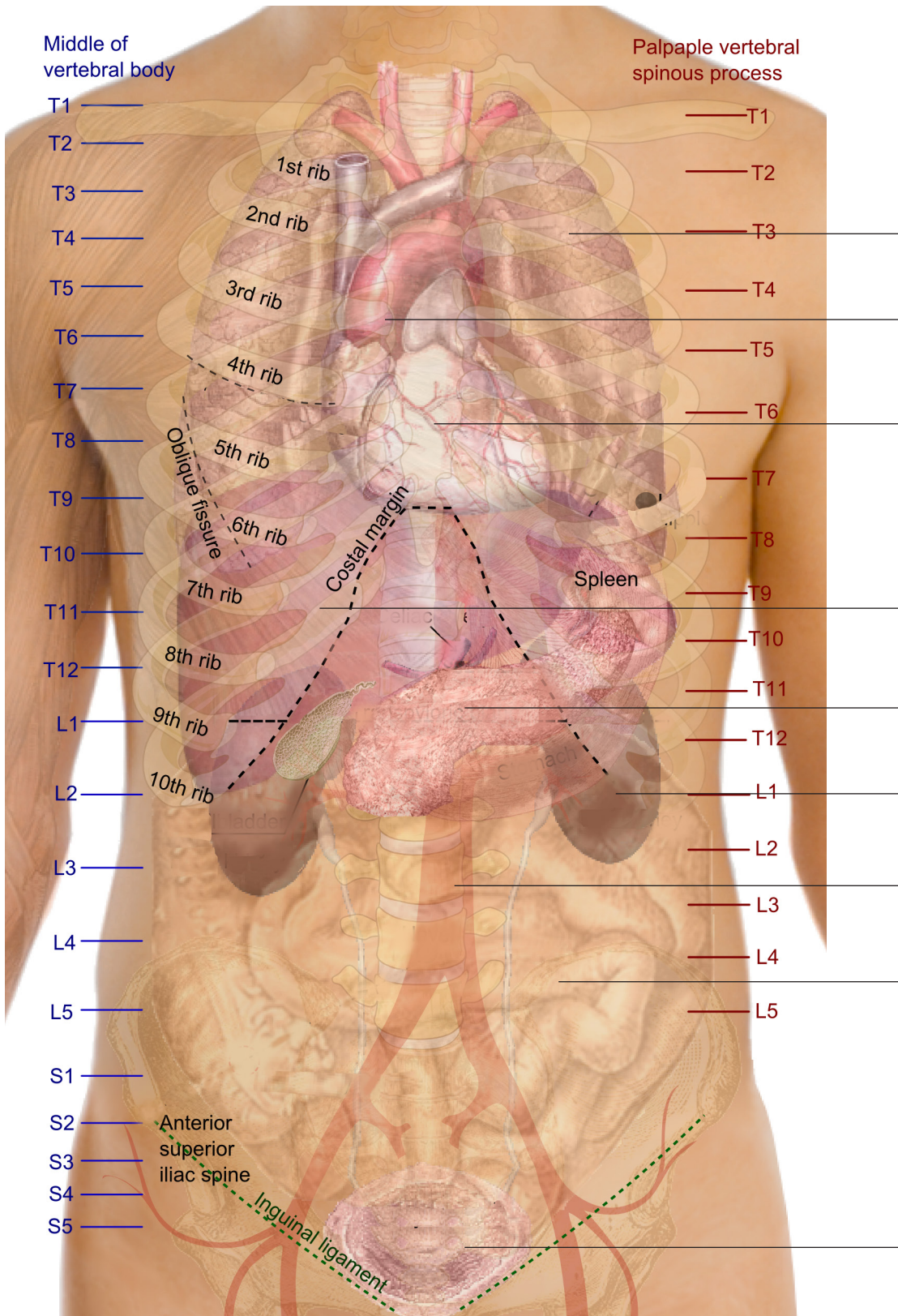
What are the main bones of the body?

90% pass mark



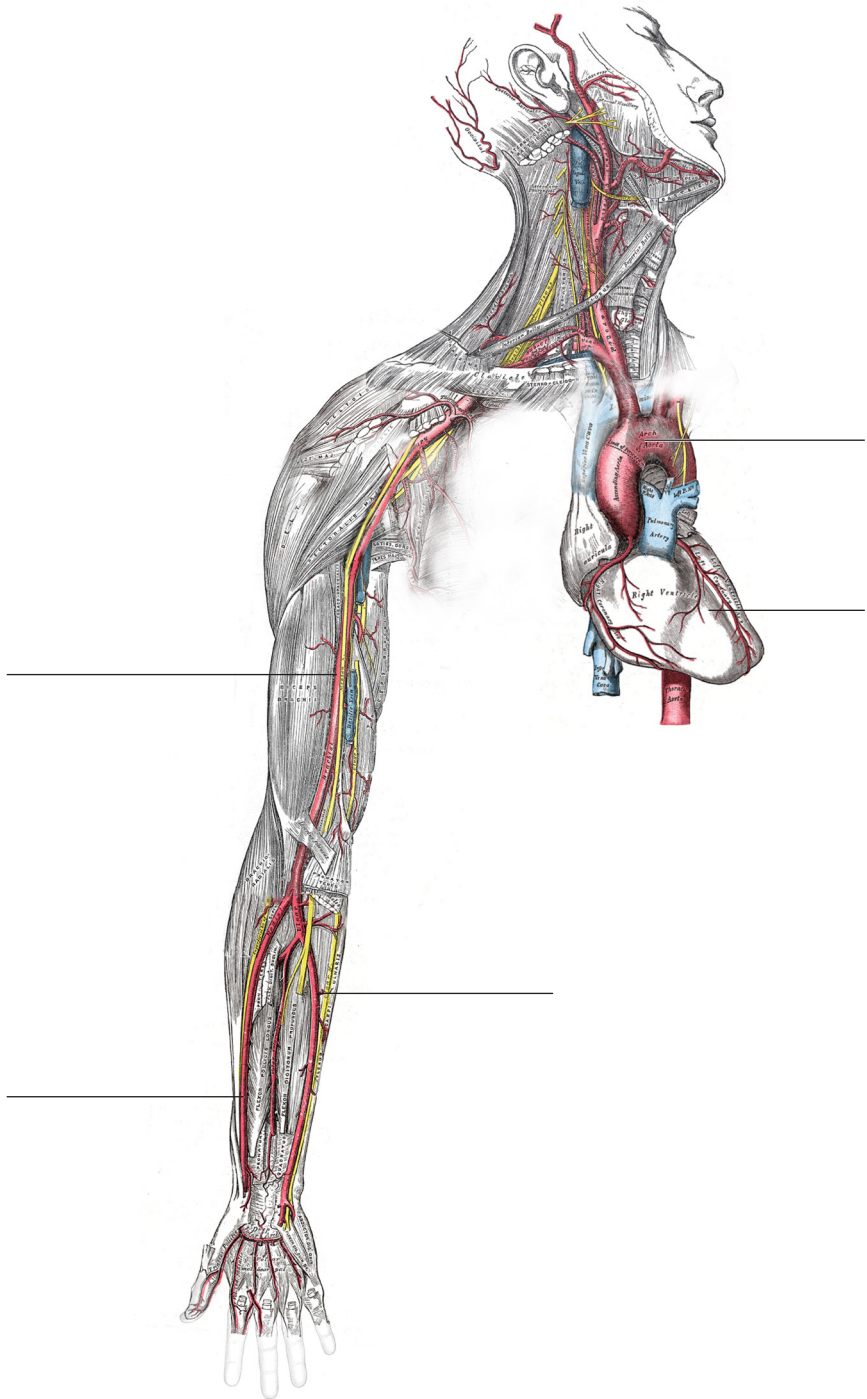
Name these organs

90% pass mark



Name these arteries (heart channel)

90% pass mark

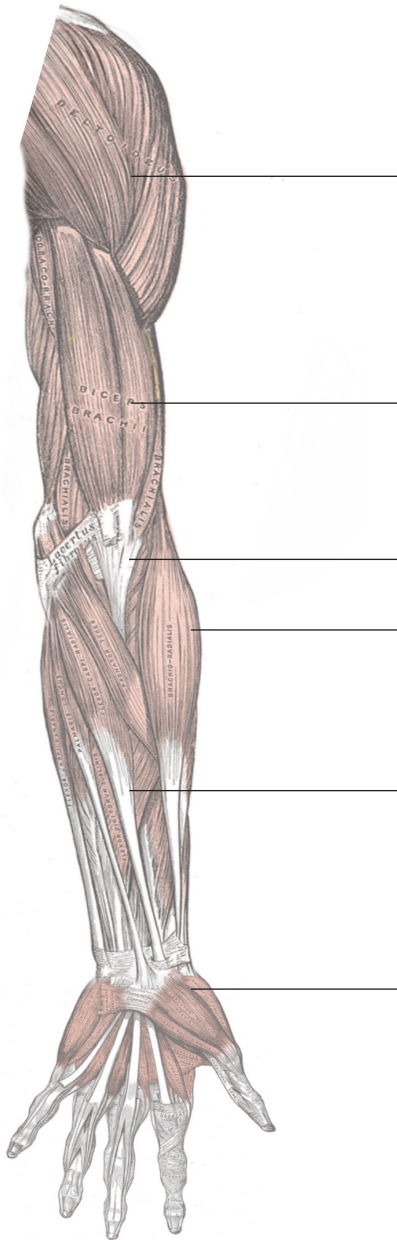


The heart channel and major arteries above the diaphragm are the exact same thing.

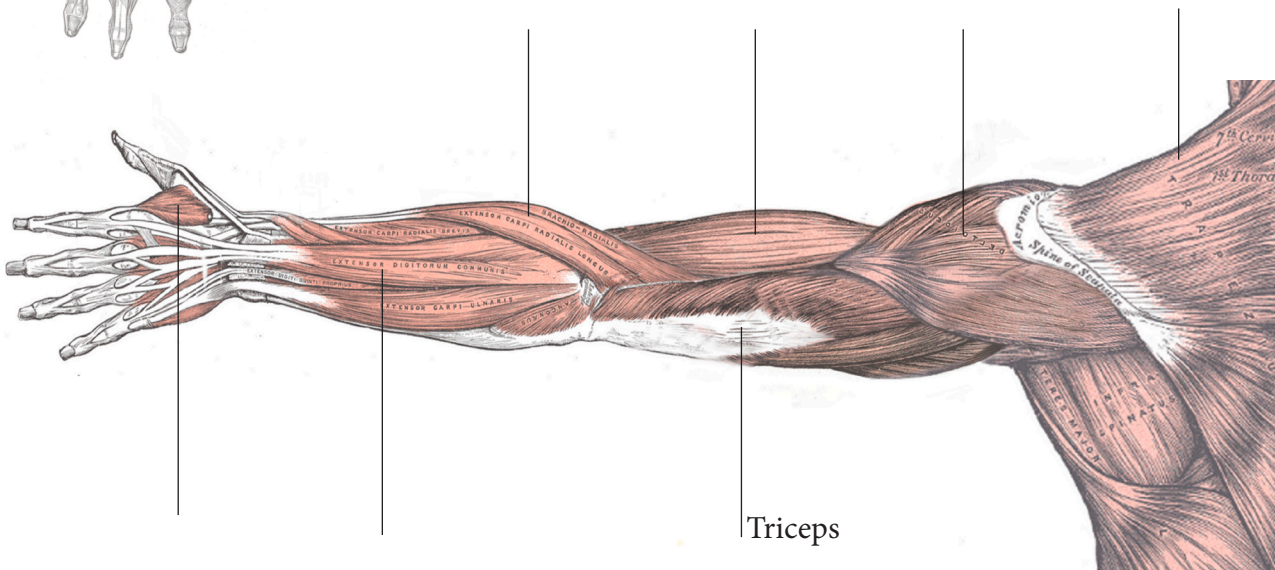
**FRONT OF ARM
(anterior / volar)**

Muscles of Arms

80% pass mark

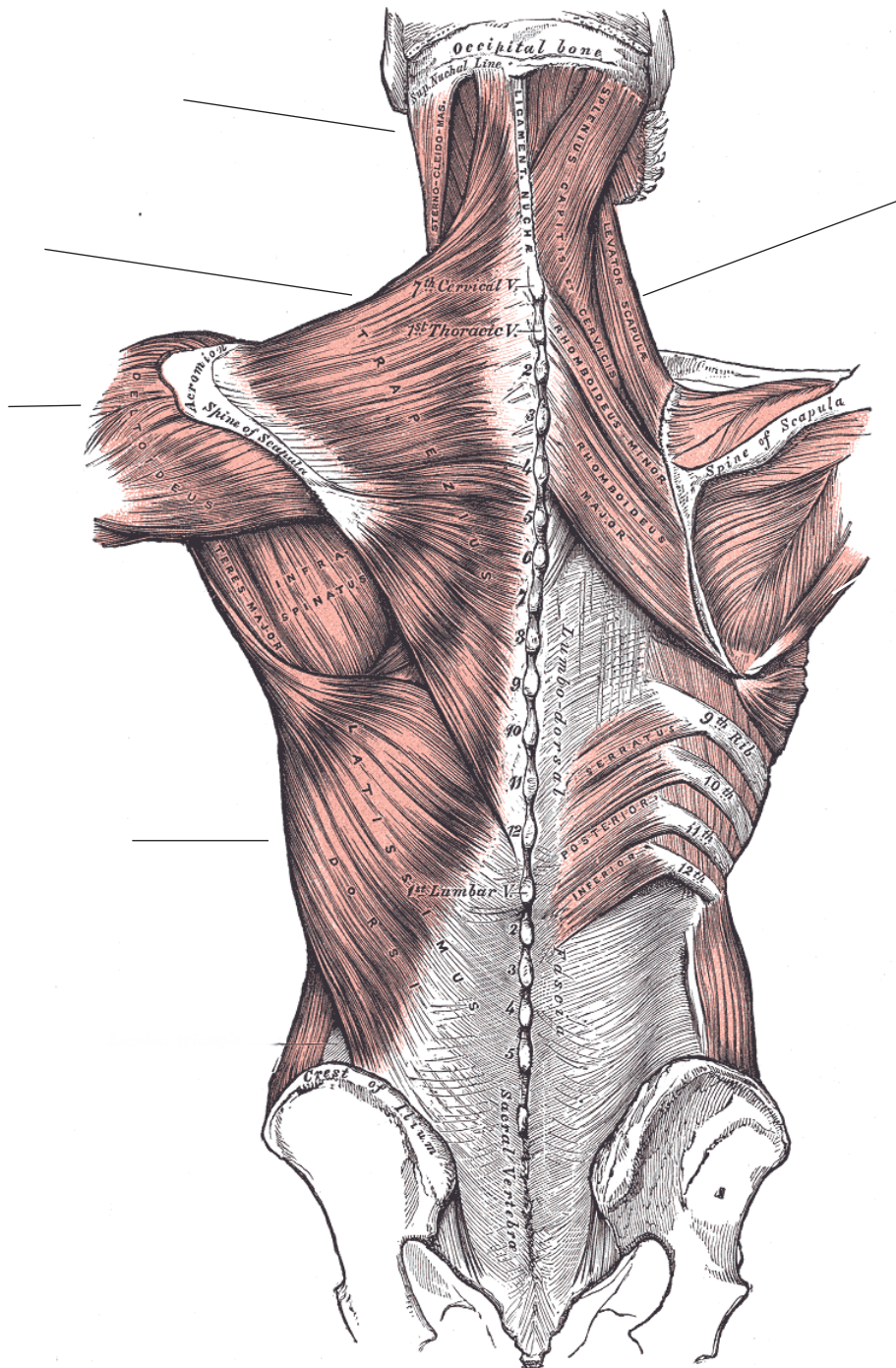


**BACK OF ARM
(posterior / dorsum)**



Muscles of Back

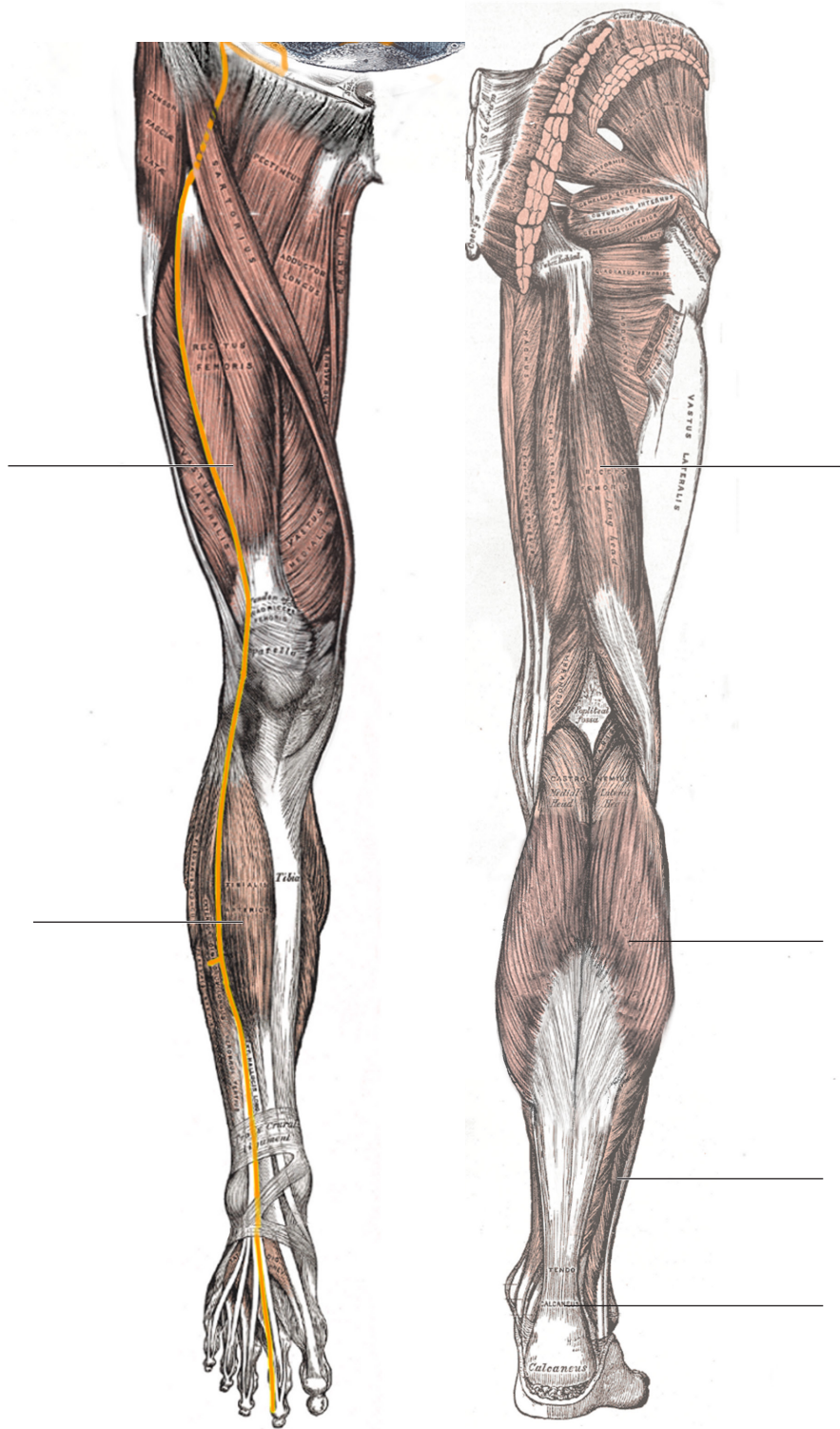
90% pass mark



Muscles of Legs
100% pass mark

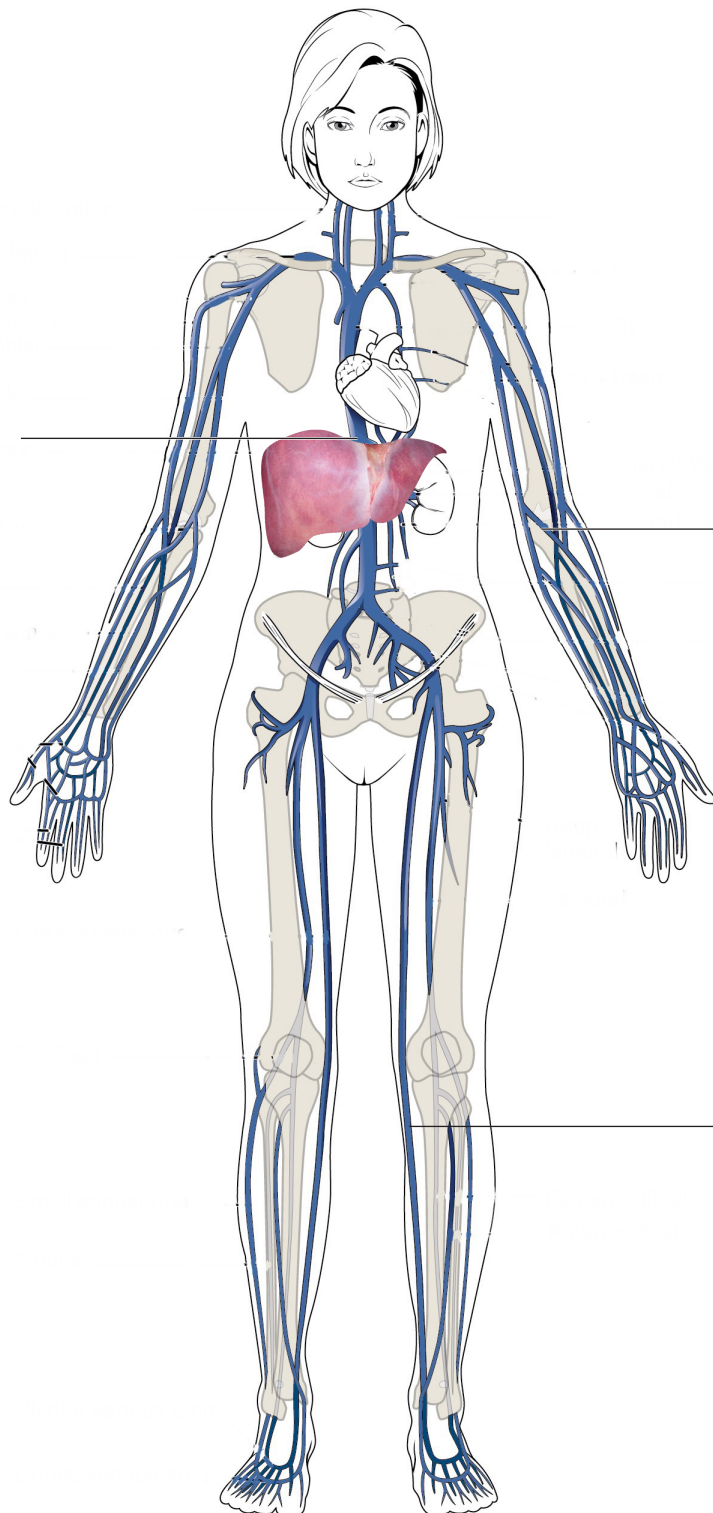
ANTERIOR

POSTERIOR



Veins of the body

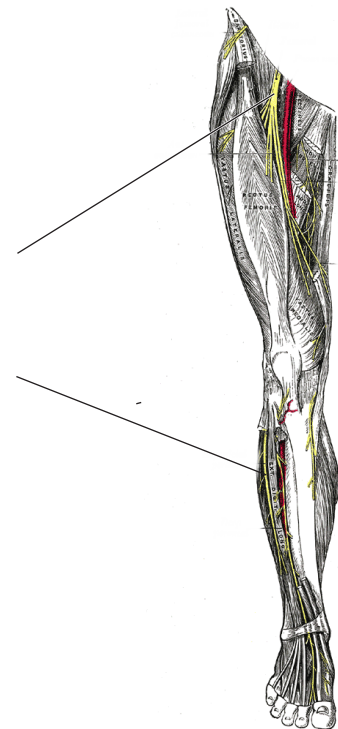
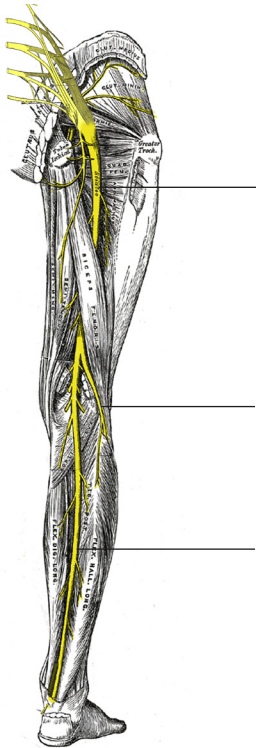
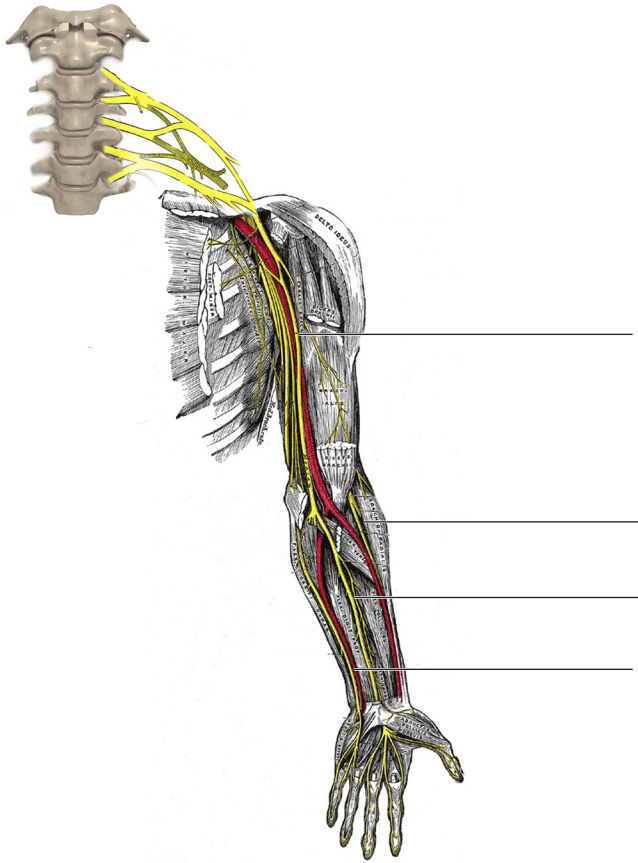
100% pass mark



The venous system is low pressure and part of the jueyin. It stores blood and when too thick can clot.
'Blood thinners' e.g. warfarin, clexane; invariably work on the liver production of clotting factors.

Nerves and of the arm and leg + innervation

90% pass mark



The nerves of the body emerge from ectoderm and so are part of the taiyang division.
They are rich in qi

Physiology

S.S.O.M.A.

Month One

Functions of the Spleen

100% pass

Fill in the blank boxes

	Function	Actual function	Hormone involved	When goes wrong!	Example of drug used
PATHOGEN		Removes old, damp red cells. Removes pathogens. Regulates serotonin via platelets.	Serotonin	Sallow complexion. Tired. Loose stools. Easily bruised.	None. Severe cases will cause leukaemias. Vincristine can work well.
SPIRIT		Clear thinking and rational thought. Balanced emotional output.	Serotonin	Obsessive compulsive disorder. Autism. Aspergers.	Selective serotonin reuptake inhibitors eg prozac work for OCD.
SENSE		Taste	Serotonin!	Loss of taste, often with loss of smell.	Nil. Lung 7 may help though!
MANIFESTS	Strong muscles.	Strong muscles, keeps organs in place (i.e. no hernias)	Serotonin	Hernias	Operations
FUNCTION	Governs transformation and transportation	Moves stools through bowels at appropriate rate.	Serotonin	Diarrhoea or loose stools.	Serotonin blockers (banned as caused bowel obstruction)
FUNCTION	Governs transportation.	Releases insulin to TRANSPORT sugar into cells.	Insulin released by... serotonin!	Diabetes	Insulin
FUNCTION	Keeps blood in vessels.	Clotting function as governed by platelets.	Serotonin (literally means 'blood vessel toner').	Bleeding	Aspirin (causes bleeding).

Functions of the Liver

100% pass

Fill in the blank boxes

	Function	Actual function	Hormone involved	When goes wrong!	Example of drug used
PATHOGEN		Stops erratic movement of qi that would cause e.g. convulsions, arrhythmias and urticaria. Regulates 'de-toxifies' blood.	Histamine predominantly. Other destabilising molecules.	Convulsions. ps always consider du points for clearing wind.	Anti-epileptics (almost all of which cause liver to work harder).
SPIRIT		Allows planning (see) the future.	Nil clear	Poor decisions, no planning, chaotic lifestyle. Also vivid dreams.	Aspirin (causes bleeding).
SENSE		Vision requires a clear substance to see through - the humours and lens. This is nourished by liver-blood.	Nil	Poor vision. Dry eyes.	Nil.
MANIFESTS	Nails	Creates keratin which makes strong nails.	Keratin	Cracked weak nails. Generalised rather than local - channel change.	Nil known.
FUNCTION	Dredges	Removes waste products from portal venous blood like bacteria	Nil known. Kupfer cells (a type of white cell) clear this.	Sluggish blood flow. Pain due to qi stagnation. Irritable.	None
FUNCTION	Drains	Seperates lymph from red cells allowing regulation.	Nil. Occurs in space of Disse in liver.	Sluggish blood flow. Portal hypertension. Pain due to qi stagnation. Irritable,	Alcohol and recreational drugs can increase this.
FUNCTION	Regulates	Cleans and detoxifies serous part of blood - 'liver blood'.	Liver cells themselves.	Blood problems like clotting disorders causing thick blood.	Warfarin can thin the blood.
1 FONC.	Stores blood	Involves entire venous system.	Nil	Low blood pressure, postural hypotension.	Blood transfusion in extremis.

Physiology Month One

S.S.O.M.A.

Functions of the Heart

100% pass

Fill in the blank boxes

	Function	Actual function	Hormone etc involved	When goes wrong!	Example of drug used
PATHOGEN		Creates high blood pressure or fast heart rate.	Various inc: adrenaline renin angiotensin	Stroke, organ damage, heart failure.	Beta-blocker (blocks beta-receptors of adrenaline)
SPIRIT		The soul of the person as relates to talking, memory, and cognition and clear eyes.	Brain stuff!	Psychiatric or personality problems.	Generally in extremis dopamine blocking agents used.
SENSE ORGAN		Ability to talk clearly and cogently.	Brain stuff! The neurones are supplied by arteries - this is the 'heart'.	Dysphasia, aphasia, coordination problems. Typically caused by stroke (CVA).	Nil. Operations to open blood vessels would work in theory.
MANIFESTS	Complexion	Bright eyes, clear complexion, rosy colour.	Good blood pressure and good shen!	Dull eyes, dark or pale complexion - can tend towards black.	Nil specific.
FUNCTION	Circulates blood and nutrition.	This is the 'classical' Western description.	Heart beats spontaneously.	Tired, swollen ankles (kidney failure), pale complexion.	Dopamine agonists.
FUNCTION	Makes blood	Creates blood in arteries / capillaries of bone marrow under influence of erythropoietin.	Erythropoietin	Bone marrow failure. Also renal failure.	Erythropoietin
FUNCTION	Controls sweat	If the heart gets hot it uses its paired taiyang organ to open the sweat pores and cool down	Complex but involves vagus nerve aka yin qiao mai.	Night sweats, hot flushes.	Oestrogen. Acts as kidney 'water' to cool things down.

Functions of the Lung

100% pass

Fill in the blank boxes

	Function	Actual function	Hormone etc involved	When goes wrong!	Example of drug used
PATHOGEN		Clears damp by eliminating CO2 (this is stored as carbolic acid in the blood).	Breathing controlled by phrenic nerve (part of yin qiao mai).	CO2 retention. Patient turns blue!	Oxygen
SPIRIT		The animalistic roar of a person.	Thyroxine THYROID GLAND	Sad, uninspired, lacking motivation.	Thyroxine can be given.
SENSE		Smell and all nose problems are related to the lung. This includes nose bleeds.	Serotonin (mainly)!	Loss of smell - technically called anosmia.	Nil. Lung 7 is a classic point to clear damp from face.
MANIFESTS	Skin and hair.	The skin can be considered the third lung. The hair has interesting cross-over with kidney.	Nil	Eczema, hair loss. Hair loss often related to fungi which themselves like damp.	Antifungals. Steroids for eczema (which convert essence to liver-blood).
FUNCTION	Descends and disperses qi	This is simply breathing and how it brings air into the body.	The movement of the diaphragm is controlled by the phrenic n.	Sneezing, coughing.	Salbutamol is an adremaline agonist. Makes airways open. Allows kidneys to anchor lung qi,
FUNCTION	Keeps water passages clear.	Especially true in face where failure causes sneezing and runny nose	Bradykinin and histamine (possibly).	Sneezing especially. Swollen face. Runny nose.	Decongestents. These contain adrenaline like substances.

Functions of the Kidney

100% pass

Fill in the blank boxes

	Function	Actual function	Hormone, cells, nerve or organ.	When goes wrong!	Example of drug used
PATHOGEN		Generates high blood pressure through hormones.	Adrenaline,	CO2 retention. Patient turns blue!	Oxygen
SPIRIT		Willpower (and fear)	Dopamine & adrenaline ADRENAL GLAND	Lacking motivation	Dopamine agonists.
SENSE		Good hearing	?	Progressive deafness. Occurs in an age related way associated with essence.	Nil
MANIFESTS	Hair	Pigment cells in hair made by neural crest cells and so essence.	Neural crest cells	Grey hair that falls out. Often involves lung too - some cross over.	Nutrients.
FUNCTION	Dominates water	Removes excessive water via the bladder. Regulates ions in blood. Prevents water / hypertension.	Adrenaline Dopamine Aldosterone Vasopressin Renin etc	Bilateral ankle swelling (this is almost always kidney related).	Diuretics Medications to reduce blood pressure.
FUNCTION	Stores essence	Especially adrenal hormones, testosterone and oestrogen,	Neural crest cells.	Tired, swollen ankles (kidney failure), pale complexion, grey hair	Dopamine agonists.
FUNCTION	Controls lower orifices.	Controls the function of urethra and anus.	Adrenaline related.	Piss and shit yourself!	Nil however beta-blockers would work.

Functions of the Pericardium

100% pass

Fill in the blank boxes

	Function	Actual function	Hormone, cells, nerve or organ.	When goes wrong!	Example of drug used
PATHOGEN		The pericardium mainly prevents blood clots moving from liver into heart via lungs.	Thick strong membrane wrapped around lung called blood-air barrier.	Blood clots get into heart and then can go to brain and cause stroke. This is possibly why ancients described it as attack of wind.	If presence of clots detected then drugs that work on the liver to dissolve clots eg warfarin.
SPIRIT	Ambassador to heart	Healthy pericardium acts to protect heart from	Physical barrier.	Emotionally - too open or closed in relationships. Physically - CVA's and other clot related problems.	
SENSE	As heart				
FUNCTION					